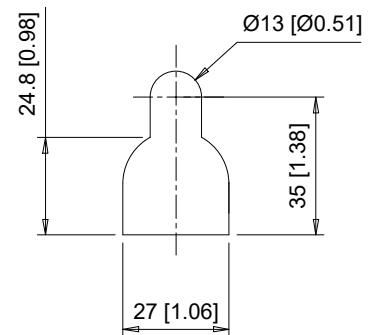


Note: Spreader bar required to avoid damage during lifting



Detail A
Top mounting hole dimensions
Scale 1:2

The dimensions shown are for an IP20 Type Drive that has been converted to a U/L Type 1 Drive by adding the parts from U/L Type 1 Kit part number UUX001701

C/C: FP65□	INPUT VOLTAGE 3-PHASE (VAC)	WEIGHT Kg (lb)	COOLING FANS
4477□□□	380 TO 480	227 (499.9)	2
4515□□□		227 (499.9)	2
4590□□□		247 (545.1)	2
4720□□□		245 (540.7)	3

□ denotes A-Z

YASKAWA

UNITS MM [IN]
SCALE 1:20

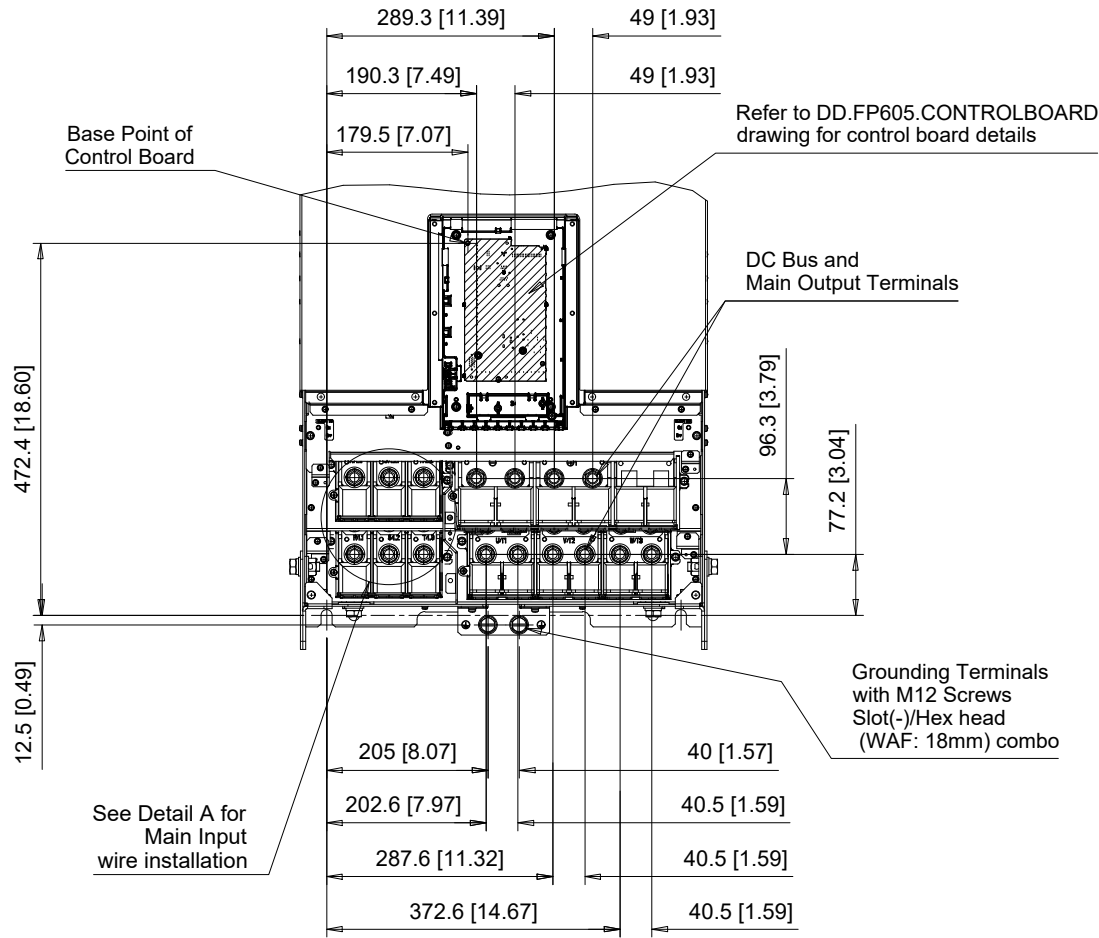
DRWN. J. MATTAS 4-20-22
CHKD. J. PIOTROWSKI 4-20-22
TECH. L. UDDIN 4-25-22
APRV. J. CAIRO 4-21-22

TITLE
FP605 DIMENSION DRAWING
FRAME SIZE 11
IP20/UL TYPE 1 ENCLOSURE

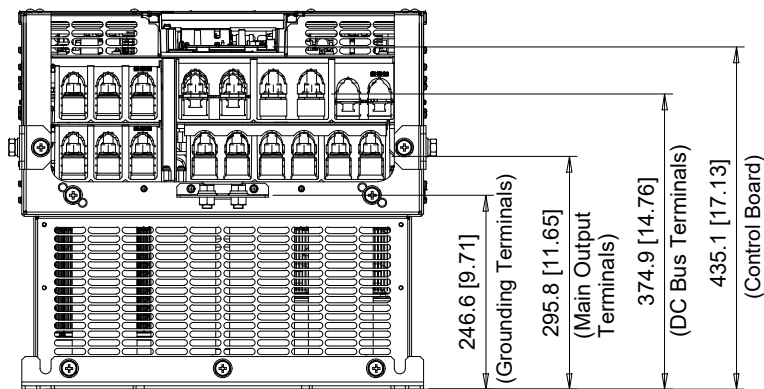
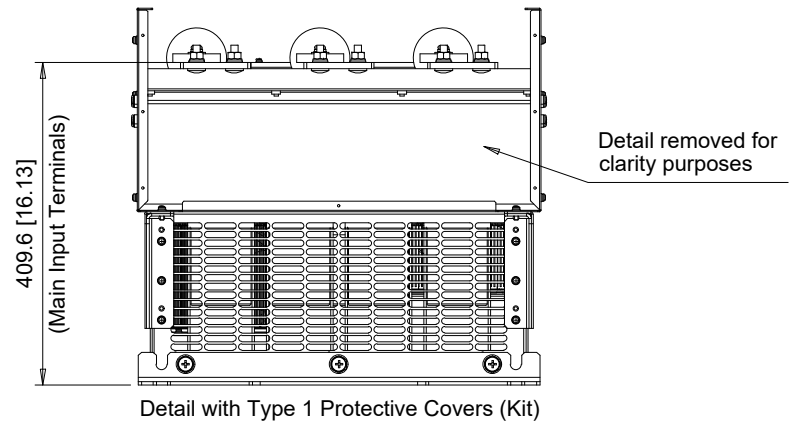
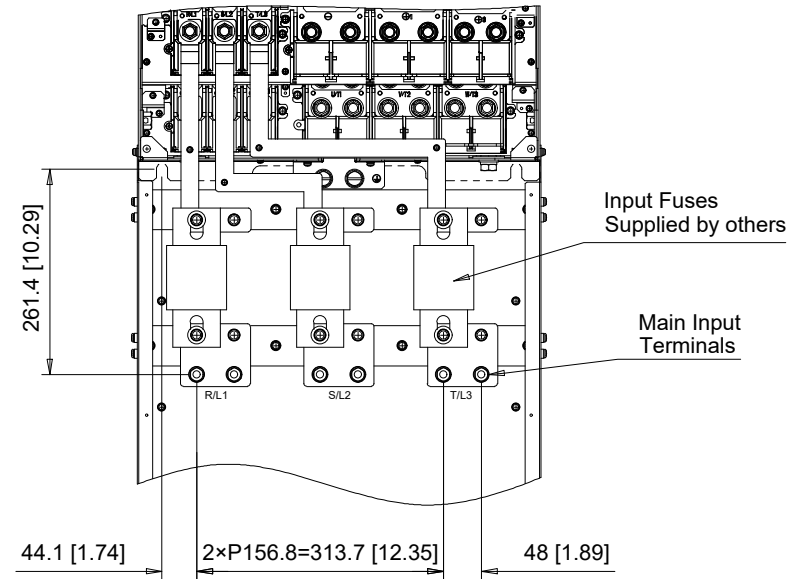
SIZE A PAGE 1 OF 4
DWG.NO. DD.FP605.FR11.T1

REV 0

Terminal and Wiring Information for FP65□4477 and FP65□4515



Detail A - Input Terminals



Detail without Type 1 Protective Covers (Kit)

C/C: FP65□	TERMINAL SYMBOL	WIRE RANGE AWG (mm ²)	TERMINAL SCREW	CLAMPING TORQUE N.m. (lb.in.)
4477□□□ 4515□□□	R/L1, S/L2, T/L3	2/0 - 300 x 4P (70 - 150 x 4P)	M12	32 - 40 (283 - 354)
	U/T1, V/T2, W/T3, U/T1, V/T2, W/T3	2/0 - 300 x 2P (70 - 150 x 2P)	M12	35 (310)
	-, +1, -, +1	3/0 - 400 x 2P (95 - 205 x 2P)	M12	35 (310)
	⊕	1/0 - 300 (50 - 150)	M12	32 - 40 (283 - 354)

□ Denotes A-Z

Note: Refer to applicable codes and standards for proper wire type and size.

YASKAWA



UNITS MM [IN]

SCALE 1:10

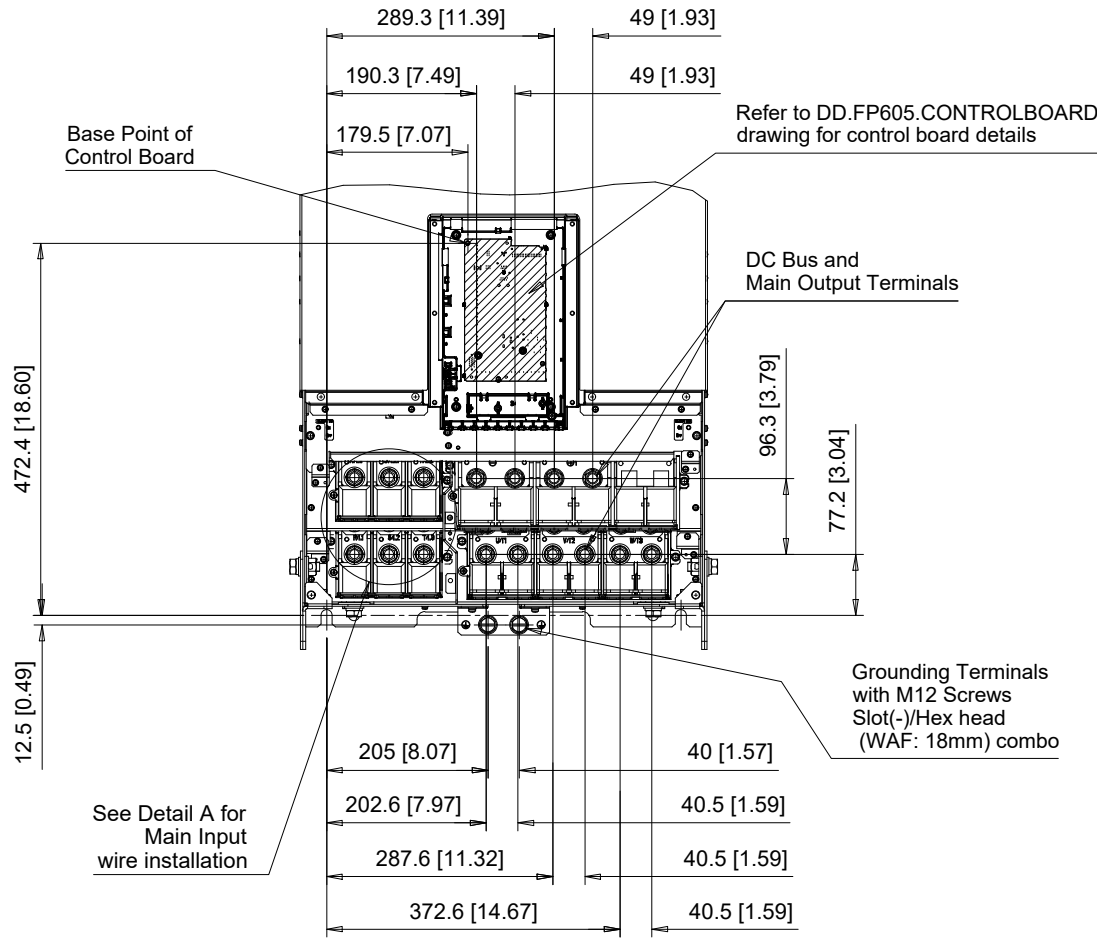
DRWN.	J. MATTAS	4-20-22
CHKD.	J. PIOTROWSKI	4-20-22
TECH.	L. UDDIN	4-25-22
APRV.	J. CAIRO	4-21-22

TITLE
FP605 DIMENSION DRAWING
FRAME SIZE 11
IP20/UL TYPE 1 ENCLOSURE

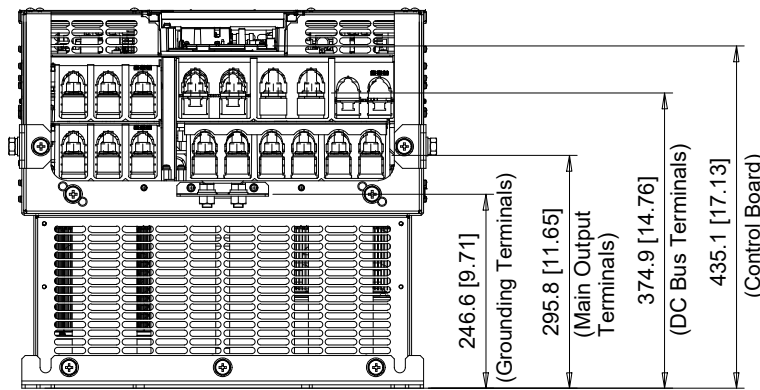
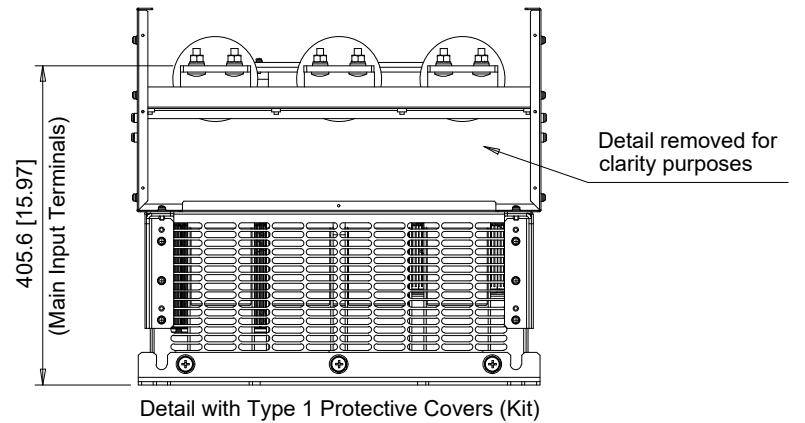
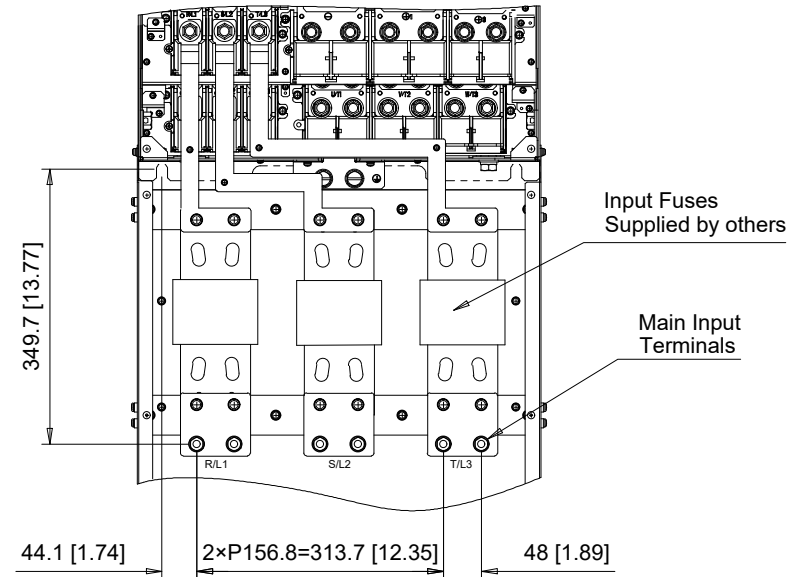
SIZE A PAGE 2 OF 4
DWG.NO. DD.FP605.FR11.T1

REV
0

Terminal and Wiring Information for FP65□4590 and FP65□4720



Detail A - Input Terminals



Detail without Type 1 Protective Covers (Kit)

C/C: FP65□	TERMINAL SYMBOL	WIRE RANGE AWG (mm ²)	TERMINAL SCREW	CLAMPING TORQUE N.m. (lb.in.)
	R/L1, S/L2, T/L3	2/0 - 300 x 4P (70 - 150 x 4P)	M12	32 - 40 (283 - 354)
4590□□□ 4720□□□	U/T1, V/T2, W/T3, U/T1, V/T2, W/T3	2/0 - 300 x 2P (70 - 150 x 2P)	M12	35 (310)
	-, +1, -, +1	3/0 - 400 x 2P (95 - 205 x 2P)	M12	35 (310)
	⊕	1/0 - 300 (50 - 150)	M12	32 - 40 (283 - 354)

□ Denotes A-Z

Note: Refer to applicable codes and standards for proper wire type and size.

YASKAWA



UNITS MM [IN]

SCALE 1:10

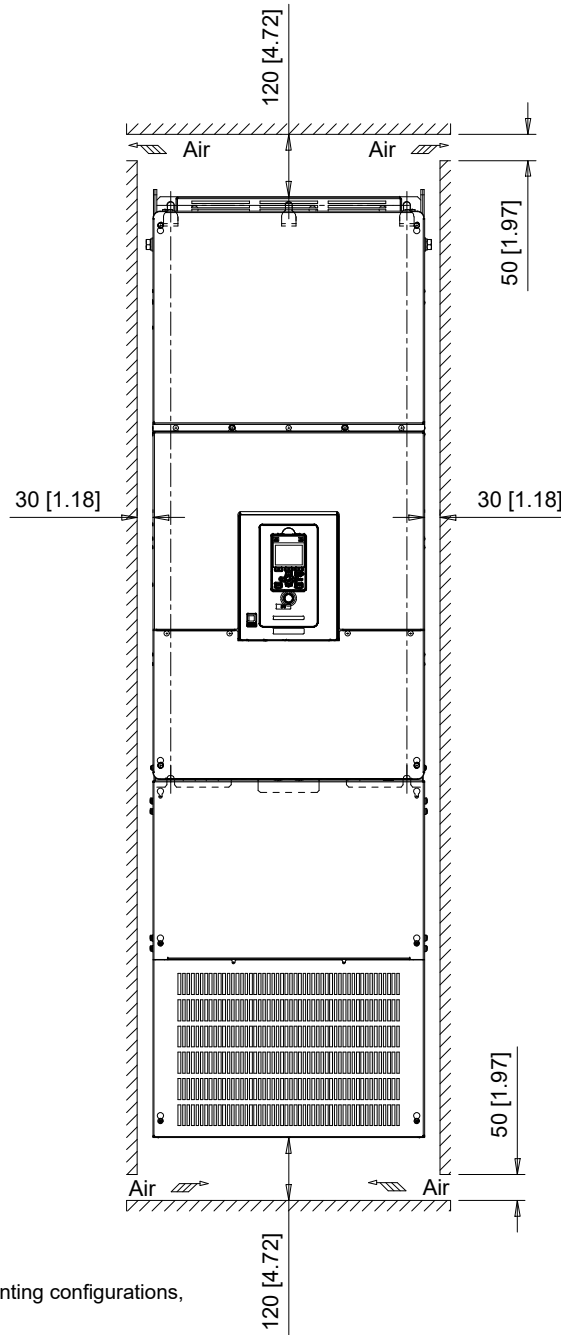
DRWN.	J. MATTAS	4-20-22
CHKD.	J. PIOTROWSKI	4-20-22
TECH.	L. UDDIN	4-25-22
APRV.	J. CAIRO	4-21-22

TITLE
FP605 DIMENSION DRAWING
FRAME SIZE 11
IP20/UL TYPE 1 ENCLOSURE

SIZE A PAGE 3 OF 4
DWG.NO. DD.FP605.FR11.T1

REV
0

Minimum Installation Clearances (Scale 1:15)



Note:
For alternate mounting configurations,
consult manual.

YASKAWA

UNITS MM [IN]
SCALE ABOVE

DRWN.	J. MATTAS	4-20-22
CHKD.	J. PIOTROWSKI	4-20-22
TECH.	L. UDDIN	4-25-22
APRV.	J. CAIRO	4-21-22

TITLE
FP605 DIMENSION DRAWING
FRAME SIZE 11
IP20/UL TYPE 1 ENCLOSURE

SIZE A PAGE 4 OF 4
DWG.NO. DD.FP605.FR11.T1

REV 0